

SHORELINE SURVEYS LTD
 Hydrographic — Geophysical — Topographic

Marford Hall, Marazion, Cornwall, UK
 Telephone: +44 1305 848211 or +44 7950 038317
 email: info@shorelinesurveys.com
 www.shorelinesurveys.com

TITLE:
 Bathymetric Survey Within Romsqle Harbour
 Royal Outer Harbour — Area 2 (Southern)

CLIENT:
 Thanet District Council
 Maritime Division

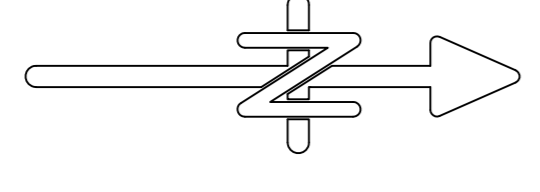
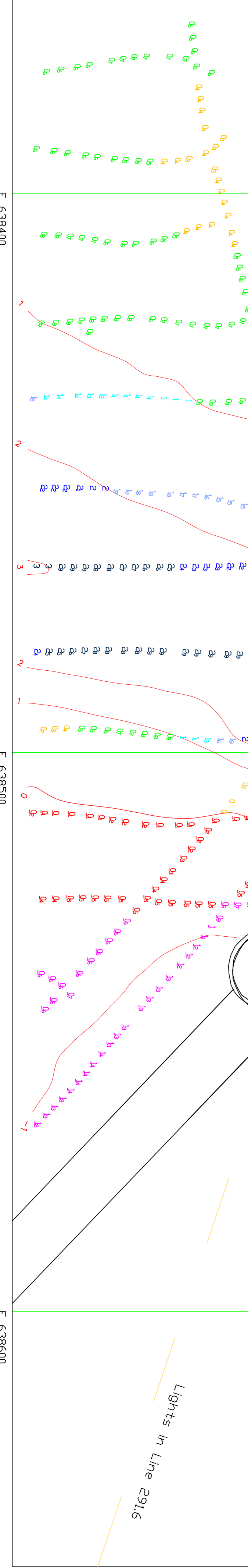
PROJECT:
 September 2018 Scheduled Survey

PROJECT NO.: J1503
DATE: 26/09/18
SCALE: 1:500
PROJECTED BY: EFD
CHECKED BY: EFD

NOTES:
 Contours are only indicative of seabed topography and should be treated as such. Shaded areas are approximate and should be treated as such.

NOTES

Contoured in OSN15
 Depths below Chart Datum (CD)
 Tidal data recorded by RTK GPS
 Line spacing: 5, 10 & 15 metres
 Contours at 1.0 metre intervals
 Positioning system: RTK GPS
 RTK reference: Trible WSNOW
 CD / ODN value: -2.58 metres
 Data presented using IHO sounding rules



Lights in Line 2916